

LONSEAL

FLOORING



NTF HIGH-PERFORMANCE RESILIENT SOLUTIONS
FEATURING THE FEATHERWEIGHT & CLASSIC COLLECTIONS



WHEN IT COMES TO AVIATION FLOORING LONSEAL DELIVERS

- **Lighter, more fuel-efficient Featherweight Collection**
- **Custom coloring and patterning**
- **8'-wide sheets**
- **World-wide product stock for timely order shipment**

The leader in resilient vinyl flooring, Lonseal has been providing the aviation industry with unparalleled products and service for over 35 years.

In addition to its distinctive selection of embossed and smooth safety and designer products, Lonseal goes the extra mile to meet aircraft clients' needs by offering custom coloring and patterning and wider sheets widths, and also by keeping continually updated product stock to ensure the fastest order shipment possible.

Lonseal's clients include airlines, manufacturers and maintenance companies, and our products can be found in the entrance, galley, flight deck and lavatory areas of nearly every type of aircraft. We also meet most major-manufacturer material specifications and F.A.A. safety standards (including F.A.R. 25.853 a and 25.793).

Lonseal's aviation flooring has an unparalleled range of moisture and slip-resistant, sound-dampening and flame-spread control surfaces that have proven themselves in countless installations — from jumbo passenger jets to cargo carriers, from charter helicopters to private planes. Lonseal's wide-width sheet vinyl makes seam welding virtually obsolete and our proven multi-layer technology protects product color and pattern-fidelity against both the toughest traffic and the test of time — ensuring that Lonseal resilient finishes are durable in every kind of environment.

Lonseal Featherweight Collection

Lonseal is especially proud of our Featherweight Collection which features sturdy three-layer construction with excellent slip resistance, sound absorption and dimensional stability properties. Our Featherweight line is 30% lighter than any of our competitors and features both our GreenMedic® formulation for improved anti-microbial properties and GreenAir® specialty formulation for improved cabin air quality.

Lonseal Classic Collection

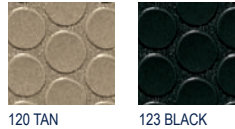
Our Classic Collection has been specially culled from Lonseal's entire product line with an eye towards suitability in color, pattern and construction for aviation markets. From the unusual pebble-texture of our Lonpearl to the rich wood grains of our Lonwoods, Lonseal's classics feature versatile solutions to every aviation flooring need.

LONSEAL FEATHERWEIGHT COLLECTION

LONCOIN I

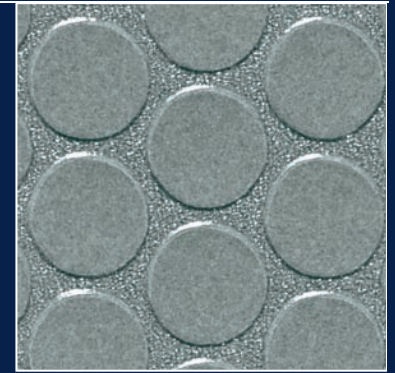
A classic coin pattern with outstanding slip-resistance, Loncoin I is Lonseal's pioneering sanitary-seam capable sheet and has proved its resilience in countless high-traffic interiors for decades.

*Attributes: roll width: 6' (1830mm); roll length: 60' (18m); thickness: 100 mil (2.5mm)
Meets FAA Flame Spread CFR Part 25, Appendix F, Part I, paragraph (a)(1)(ii), 12-second Vertical Flammability Test*



120 TAN

123 BLACK

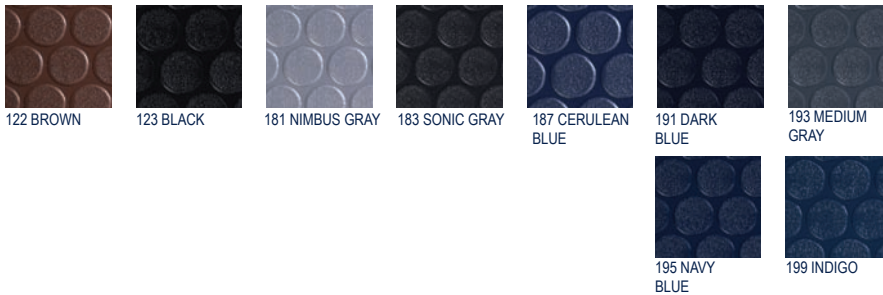


124 GRAY

LONCOIN II FEATHERWEIGHT

Constructed in three layers with excellent slip-resistance, sound-absorption and dimensional stability properties, Loncoin II Featherweight still manages to be 30% lighter than competitor products for increased fuel efficiency.

*Attributes: roll width: 6' (1830mm) or 8' (2032 mm); roll length: 60' (18m); thickness: 92 mil (2.3mm); weight: 81 oz per sq. yd.; anti-microbial formulation
Meets FAA Flame Spread CFR Part 25, Appendix F, Part I, paragraph (a)(1)(ii), 12-second Vertical Flammability Test. Meets FMVSS 302.*



122 BROWN

123 BLACK

181 NIMBUS GRAY

183 SONIC GRAY

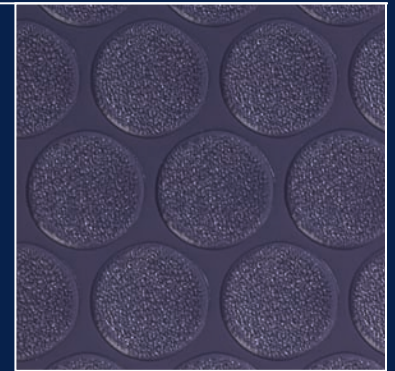
187 CERULEAN BLUE

191 DARK BLUE

193 MEDIUM GRAY

195 NAVY BLUE

199 INDIGO

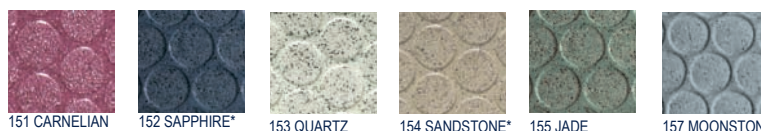


196 PURPLE BLUE

LONCOIN II FLECKS

Loncoin II Flecks' multi-colored fleck patterns add a unique sense of style to Lonseal's coin products and is available in a pleasing range of timeless colors.

*Attributes: roll width: 6' (1830mm) *Available in 100" & 102" width ; roll length: 60' (18m); thickness: 100 mil (2.5mm)
Meets FAA Flame Spread CFR Part 25, Appendix F, Part I, paragraph (a)(1)(ii), 12-second Vertical Flammability Test.*



151 CARNELIAN

152 SAPPHIRE*

153 QUARTZ

154 SANDSTONE*

155 JADE

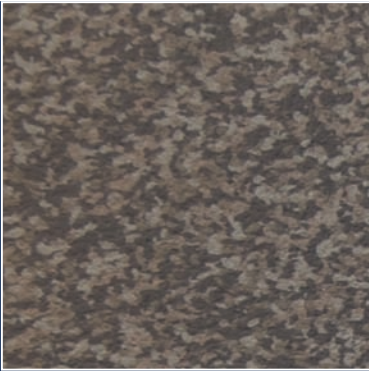
157 MOONSTONE*



150 ONYX*

LONSEAL FEATHERWEIGHT COLLECTION

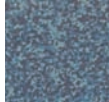
LONDURA



102 AUTUMN MIST

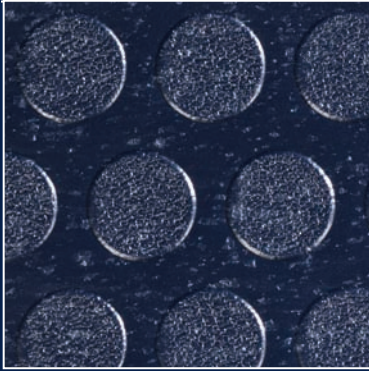
The uniquely patterned Londura features micro-embossing that increases its coefficient of friction when wet. Additionally, its revolutionary anti-microbial multi-polymer matrix sheet features longer-lasting slip-resistance and simpler maintenance than competing carborundum-mix and aluminum-oxide-chip safety surfaces.

Attributes: roll width: 6' (1830mm); roll length: 60' (18m); thickness: 80 mil (2.0mm)



101 AZURE SKY

LONSONIC NEBULA

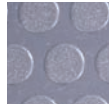


114 CASSIOPELA

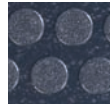
Lonsonic Nebula features a distressed pattern on its coin embossing for extra slip-resistance in addition to subtle color flecking in an array of line of cool blue and gray tones.

Attributes: roll width: 6' (1830mm) or 8' (2032 mm); roll length: 60' (18m); thickness: 90 mil (2.3mm); weight: 81 oz per sq. yd.; anti-microbial formulation

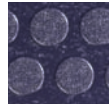
Meets FAA Flame Spread CFR Part 25, Appendix F, Part I, paragraph (a)(1)(ii), 12-second Vertical Flammability Test



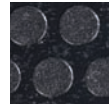
110 MILKY WAY



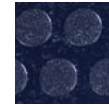
111 STARBURST



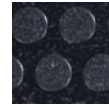
112 CELESTIAL



113 ANDROMEDA

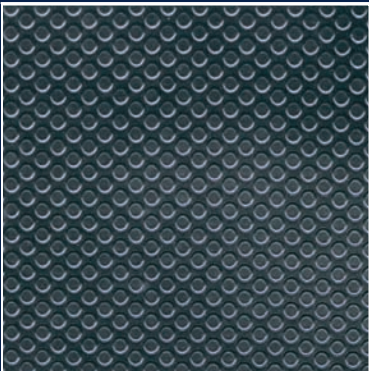


115 BLUE GALAXY



117 URSA MINOR

LONPETITE



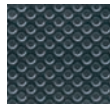
123 NAME

A twist on Lonseal's coin-stamped products and our newest aviation offering: Lonpetite, featuring a lighter embossing and smaller patterning for greater subtlety and a more contemporary elegance.

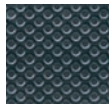
Attributes:



000 Blue?



000 Gray ?



000 Andromeda-Gray ?

LONSEAL CLASSIC COLLECTION

LONPEARL

Lonpearl is distinguished by a deceptively delicate pearl patterning that provides essential tread for high-traffic areas, and comes in an exquisite palette of shell and sea tones.

*Attributes: roll width: 6' (1830mm); roll length: 60' (18m); thickness: 100 mil (2.5mm)
Meets FAA Flame spread CFR Part 25, Appendix F, Part I, paragraph (a)(1)(ii), 12-second Vertical Flammability Test*



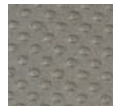
712 CASPIAN
MIST



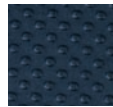
713 BALEEN
GRAY



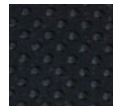
714 ARCTIC
WHITE



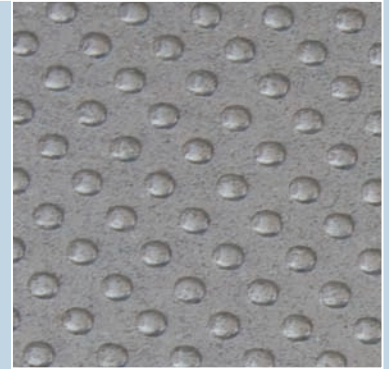
715 ABALONE
GREEN



717 ORCA BLUE



718 ODESSA
BLACK



716 MARLIN SILVER

LONPOINT MOONWALK

Blending skid-resistance with subtler coin-embossing, the resilient sheet of Lonpoint Moonwalk comes in vivid or metallic colors that give eye-catching pop to both small and large spaces.

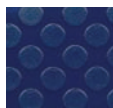
*Attributes: roll width: 6' (1830mm); roll length: 60' (18m); thickness: 80 mil (2.0mm)
Meets FAA Flame spread CFR Part 25, Appendix F, Part I, paragraph (a)(1)(ii), 12-second Vertical Flammability Test*



343 RED



344 YELLOW



345 BLUE



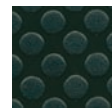
347 BISQUE



348 SLATE



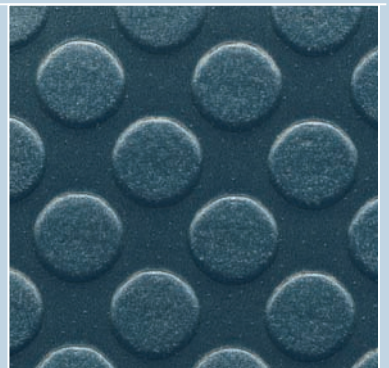
351 PLATINUM



353 BLACK



354 GRAPHITE



352 SAPPHIRE

LONSEAL CLASSIC COLLECTION

LONWOOD DAKOTA



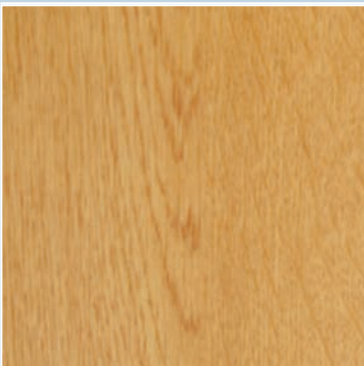
81 BURGUNDY

Lonwood Dakota boasts a durable, subtly-embossed sheet that evokes the open-grain of natural oak and the nuance of knot-free, quarter-sawn plank. With a dozen authentic color-patterns, Lonwood Dakota has all the aesthetic appeal of wood while providing far greater ease of maintenance.

*Attributes: roll width: 6' (1830mm); roll length: 60' (18m); thickness: 80 mil (2.0mm)
Meets FAA Flame spread CFR Part 25, Appendix F, Part I, paragraph (a)(1)(ii), 12-second Vertical Flammability Test*



LONWOOD NATURAL



457 BUCKWHEAT

Lonwood Natural contains the same realistic wood patterning as Lonwood Dakota while giving an extra visual impact through a variety of striking colors schemes taken directly from nature — from the dewy beauty of Rainfall to the fragile elegance of Quail Eggs.

*Attributes: roll width: 6' (1830mm); roll length: 60' (18m); thickness: 80 mil (2.0mm)
Meets FAA Flame spread CFR Part 25, Appendix F, Part I, paragraph (a)(1)(ii), 12-second Vertical Flammability Test*



Note: Due to printing process limitations, printed colors may not match the actual flooring colors. If color match is critical, please request a sample.

LONSEAL: THE INDUSTRY STANDARD

Lonseal strives to provide the finest quality environmentally-conscious products and, in the process, continually meets the highest industry standards from both manufacturing and distribution standpoints.

Lonseal's products are manufactured in a facility with the following quality standards:

ISO 9001 and JIS Z9100 Quality Management System (Aerospace)

The aim of the standard(s) are to have a set of procedures that cover all key processes in the business, monitoring those processes to ensure effectiveness and facilitating continual improvement.

ISO 14001 Environmental Management System

The aim of the standard is to reduce the environmental footprint of a business and to decrease the pollution and waste a business produces.

Likewise, Lonseal's distribution facility has been certified **AS9100 by the International Aerospace Quality Group (IAQG)**. The certification is an international standard that assures quality in the design, development, production, installation and servicing of aviation, space and defense products to help reduce variation across the industry. Established to implement initiatives that increase quality and reduce cost of products in the aerospace industry, AS9100 incorporates the International Organization for Standardization 9001:2000 standard to include additional requirements for a quality management system. Mandating ongoing improvements in products and processes and setting forth rigorous compliance guidelines, receipt of this standard attests to Lonseal's dedication to consistently meeting and exceeding the standards of superior quality in aviation flooring.



LONSEAL

LEAVE AN IMPRESSION

For complimentary samples,
please call 800.832.7111;
Outside the U.S., call: +1.310.830.7111

For more information, go to:
www.lonsealspecialty.com

Lonseal
928 E. 238th Street
Carson, CA 90745 USA
310.803.7111
Fax: 310.830.9986